



Ready to be Installed in RTW-SS67 Cell



Designed for increased productivity

Mached table with guide bushes for positioning

Exchange of station manually with automatic indexing system

Automatic program identification per station

1

2

3

4



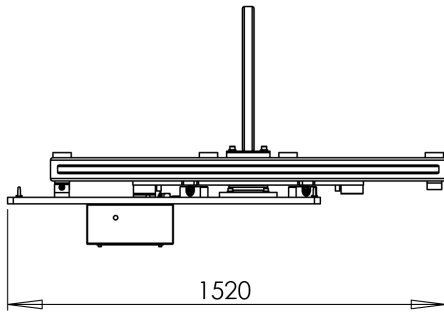
The **RTW Manual Turntable** has 02 (two) workstations ready to be installed in the RTW-SS67 cell.

The equipment was designed for companies that wish to increase the productivity of their cells without the need to invest in a new robot, just by adding a new workstation.

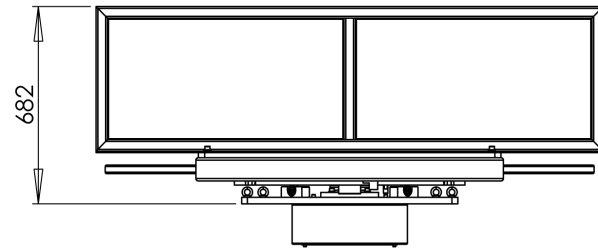
Best cost-benefit of the market, equipment of easy installation and total integration between all the components of the cell.

Workstation dimensions	530 x 1050 mm
Maximum table load capacity	200 kg
Weight	390 kg
Pressure	6 BAR
Flow	0,1 L/s
Size in m²	See cell size

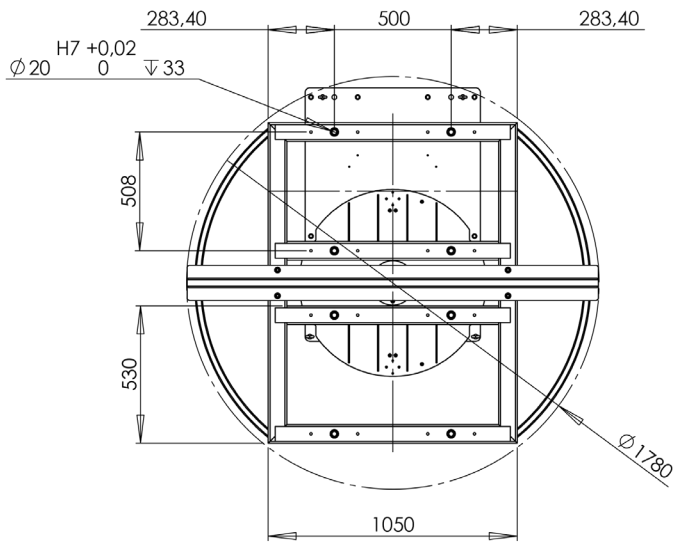
Measures



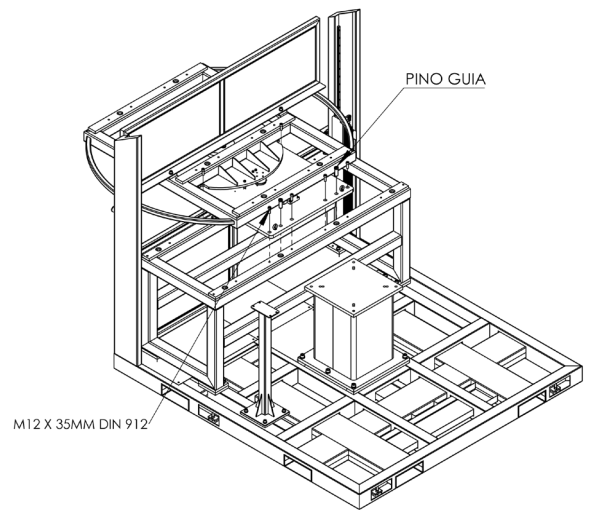
Side



Front



Working Area



Turntable



Turntable